



WOLF CREEK
PORTABLE PIPING PRODUCTS

We are here to make your life easier!



genuine
BAUER

Our History



Since 1961, The Wolf Creek Company has been involved with water. For years we have supplied irrigation products to farms, golf courses, nurseries, and landscape users. Our relationship with Bauer began in 1976 and they quickly became one of our most important manufacturing partners.

Bauer fittings have been a worldwide success for more than 60 years. Why? Because of the ease of use, durability, and it's the most reliable portable piping system ever created.

Applications for the Bauer couplers are vast. Any pumping project, mining operation, construction site, chemical conveyance, powdered materials, or even food preparation will benefit. In other words, anyone who needs to move fluid from point A to point B will benefit from using the Bauer coupled pipe line. The Bauer pipe and fittings product line provides the reliability and ease of use that other coupler types cannot match.

Today we supply Bauer couplers on steel pipe and high density poly pipe to companies across North America. Product is stocked at our Dayton, Ohio facility, which has been built to support your needs. Our on-site manufacturing facility gives us the ability to provide custom pieces to suit any application.

Our experienced staff understands what you need, and work to fulfill those requirements. We're certain that you will be pleased with our products, and customer service.



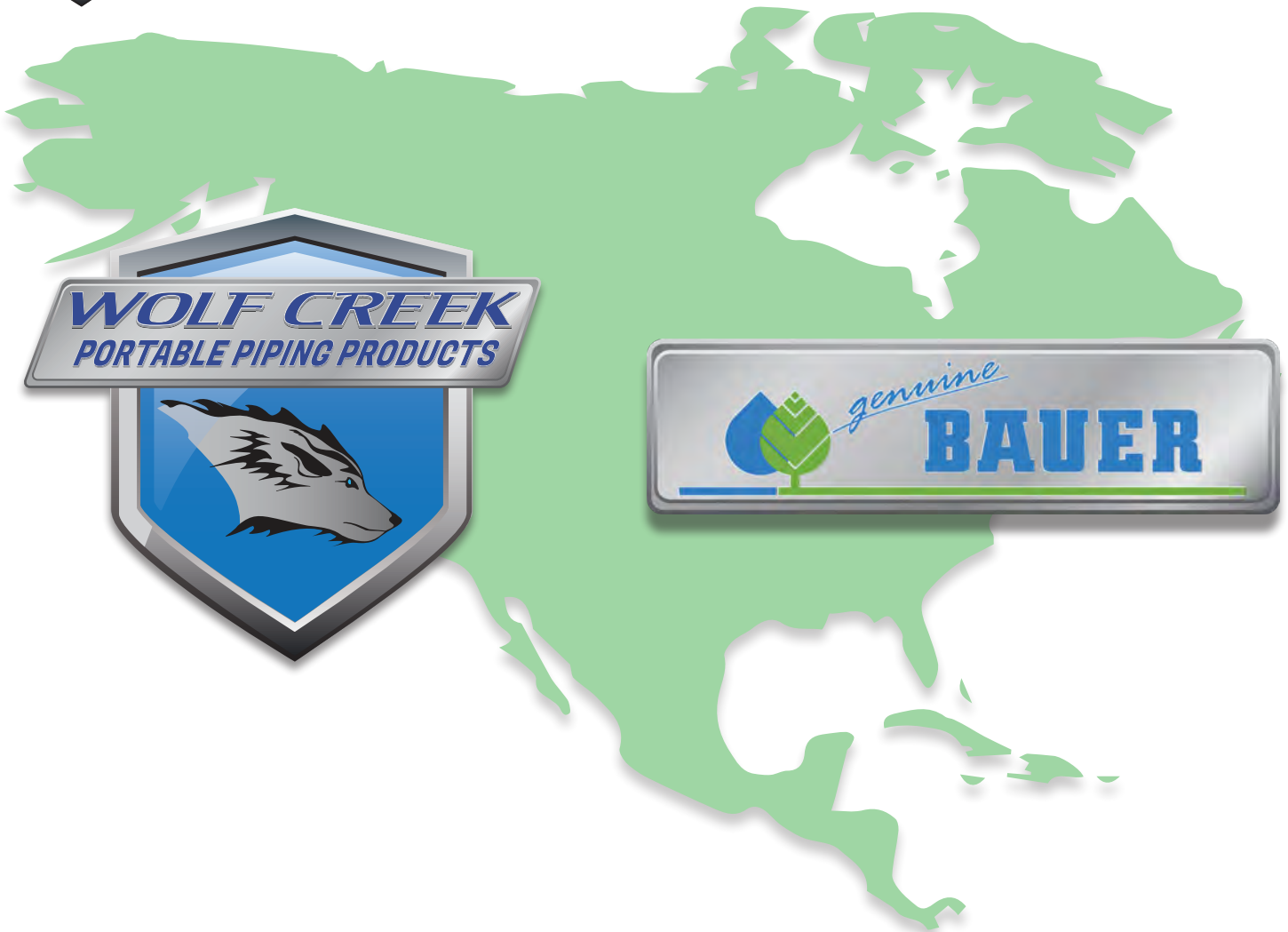


Table of Contents

i	Our History	11	Genuine Bauer Fittings	27	10-12" B Type Hose Fittings
ii	Table of Contents	12	Flanges	28	10-12" Anfor Hose Fittings
iii	The Bauer Difference	13	Enlargers and Reducers	29	Storage Systems and Road Crossings
1	PolyBarb HDPE Pipe and Tails	14	Elbow's	30	Storage Systems and Road Crossings
2	PolyBarb HDPE Pipe	15	WYE's	31	O-Rings / Gaskets
3	PolyBarb Tails	16	Tee Configuration Diagram	32	Warhammer Multi-Closing Tool
4	PolyBarb Sets	17	TEE's	33	Terms of Business
5	Galvanized Steel Pipe	18	Enlargers and Reducers	34	Terms of Business (cont.)
6	Steel Pipe	19	Threads	35	Credit Application
7	Hose Fittings	20	Strainers		
8	Genuine Bauer Hose Fittings	21	Air Vent Pipes		
9	WC Crimp Hose Fittings	22	End Caps		
10	Stock Bauer vs. WC Crimp	23	Flange x Flange		
		24	Hunnebucket Strainers		
		25	Adapters		
		26	Adapters		

We are here to make your life easier!



Notice the welded straps for the lever arms?
The Genuine Bauer levers are held to the ring by welded straps. These straps do not wear out or stretch, ensuring longer life and a stronger connection.

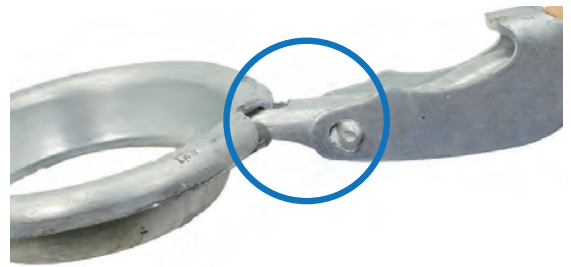
Notice the “squared nose” on the Genuine Bauer lever?
This “square nose” is what keeps the Genuine Bauer lever in the closed position without requiring a locking pin.

Now for the generic fittings...
Generic fittings use rivets to hold the lever arms onto the ring. Since there isn't a square nose design to the lever, they can easily come open.

This is why generic fittings have to use locking pins to keep closed. Under normal use, the rivet holes can become sloppy. This slop makes the levers loose. A loose lever arm can cause a potential leak on the joint.

Only Wolf Creek's Genuine Bauer Fittings have the Quality Your Tough Job Demands

You can see the difference between the Genuine Bauer original 'B' type and generic 'B' type lever closure.



Ask your hose supplier for Genuine Bauer! If the name isn't on the handle it's not Genuine Bauer!



PolyBarb HDPE Pipe and Tails





PolyBarb HDPE Pipe and Tails

Wolf Creek's PolyBarb™ portable pipe combines the ease and quickness of the Genuine Bauer Quick Coupler with the durability of HDPE pipe.

Our patented barb and retainer fitting creates a positive, high pressure, leak-proof connection.
(Patent # US 7,025,390 B2)

The welded hinge pins add strength and durability above all others. This is because our competitors use riveted pins that tend to pull apart (see previous page).

Pipe performance is based on the specifications of the HDPE pipe.



PolyBarb Pipe Specifications

Size	SDR	HDPE PSI	Coupler PSI	Bend Angle	
4"	17	125	174	30	*Based upon Resin PE4710 *Pressures are based on water at (73.4 degree F)
6"	17	125	174	20	
8"	17	125	174	20	
8"	26	80	174	20	
12"	17	125	50	16	



The PolyBarb couplers mounted on a HDPE "tail" to be fused on pipe in the field

- Can also be used to build poly fittings or step bows
- Tails are less costly to ship than complete pipe
- Purchase a male and female coupler with an O-ring to make a complete set
- PolyBarb tails are stocked with SDR-17 and SDR-26 HDPE (8" only) tails

**O-rings sold separately, page 31*

PolyBarb HDPE Pipe



10' PolyBarb Pipe- SDR17

SDR- 17 HDPE pipe with Bauer Couplers
Pipe sizes DO NOT include an O-ring

PCP4X1017	PolyBarb Pipe 4in	28 lbs
PCP6X1017	PolyBarb Pipe 6in	59 lbs
PCP8X1017	PolyBarb Pipe 8in	92 lbs



20' PolyBarb Pipe- SDR17

SDR- 17 HDPE pipe with Bauer Couplers
Pipe sizes DO NOT include an O-ring

PCP4X2017	PolyBarb Pipe 4in	42 lbs
PCP6X2017	PolyBarb Pipe 6in	91 lbs
PCP8X2017	PolyBarb Pipe 8in	147 lbs



10' & 20' PolyBarb Pipe- SDR26

SDR- 26 HDPE pipe with Bauer Couplers
Pipe sizes DO NOT include an O-ring

PCP8X1026	PolyBarb Pipe 10ft x 8in	75 lbs
PCP8X2026	PolyBarb Pipe 20ft x 8in	111 lbs





- The PolyBarb couplers mounted on a HDPE “tail” to be fused on pipe in the field
- Can also be used to build poly fittings or step bows
- Tails are less costly to ship than complete pipe
- Purchase a male and female coupler with a sealing ring to make a complete set
- PolyBarb tails are stocked with SDR-17 and SDR-26 HDPE tails (8” only)

Will require a HDPE fuser on the job site or your facility to attach tails to HDPE pipe



Male PolyBarb Tail

Purchase a female tail for a complete set.

PCB417	Ball x HDPE SDR 17	4in	6 lbs
PCB617	Ball x HDPE SDR 17	6in	13 lbs
PCB817	Ball x HDPE SDR 17	8in	18 lbs
PCB826	Ball x HDPE SDR 26	8in	18 lbs



PCB1217	Ball x HDPE SDR 17	12in	76 lbs
---------	--------------------	------	--------



Female PolyBarb Tail

Purchase a male tail for a complete set.

12” fittings INCLUDE an O-ring, all other pipes DO NOT include an O-ring

PCS417	Socket x HDPE SDR 17	4in	10 lbs
PCS617	Socket x HDPE SDR 17	6in	20 lbs
PCS817	Socket x HDPE SDR 17	8in	30 lbs
PCS826	Socket x HDPE SDR 26	8in	30 lbs

**O-rings sold separately, page 31*



PCS1217	Socket x HDPE SDR 17	12in	83 lbs
---------	----------------------	------	--------



PolyBarb Set



PCSET417	PolyBarb Set SDR 17	4in	17 lbs
PCSET617	PolyBarb Set SDR 17	6in	34 lbs
PCSET817	PolyBarb Set SDR 17	8in	49 lbs
PCSET826	PolyBarb Set SDR 26	8in	49 lbs



PCSET1217	PolyBarb Set SDR 17	12in	160 lbs
-----------	---------------------	------	---------



Acres of Inventory

Product When You Need It, Ready to Ship!

We know when you need temporary piping product the delivery window is short. You need it when you need it. Our efforts focus on forecasting and assembling the right stock.

Working closely with manufactures and service providers, we continually seek ways to shorten our assembly processes. We make the investment of inventory dollars to have product ready to go. Bottom line, we are committed to being a reliable supplier of temporary piping products. That's job one.





Galvanized Steel Pipe





Light galvanized steel portable pipe with Genuine Bauer Quick Couplers can be used for suction or pressure applications to move any fluid substance.

Steel Pipe Specifications



Genuine Bauer

Size	Wall MM	Nom PSI	Bend
4"	0.85	174	30 deg
6"	1.00	174	20 deg
8"	1.10	174	20 deg

*O-rings sold separately, page 31



Anfor

Size	Wall MM	Nom PSI	Bend
12"	1.50	50	16 deg



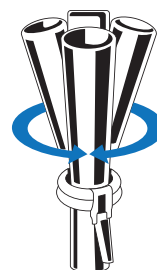
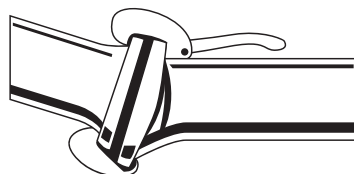
Pressure and suction tight seal up to 174 psi on sizes 4"-8" and 50 psi on 12" (according to DIN 19651).

Genuine Bauer coupler assembles and disconnects quickly and easily

Slight fluctuations in weight may result from wall thickness variations (according to DIN 1544) and zinc coating variations

- Meets ISO #9001 specifications
- Welded hinge pins for strength and durability
- Heat resistant up to 230 degrees Fahrenheit

Genuine Bauer coupler allows for up to 30 degrees of articulation to conform to dips and rises of the ground.



6-8" at 20 degrees





3' Steel Pipe

Steel pipe with Bauer couplers. Order O- ring separately!

1050111	Steel Pipe 4in	12 lbs
1070111	Steel Pipe 6in	24 lbs
1080111	Steel Pipe 8in	37 lbs



6' Steel Pipe

Steel pipe with Bauer couplers. Order O- ring separately!

1050112	Steel Pipe 4in	19 lbs
1070112	Steel Pipe 6in	34 lbs
1080112	Steel Pipe 8in	51 lbs



10' Steel Pipe

Steel pipe with Bauer couplers. Order O- ring separately!

1050113	Steel Pipe 4in	26 lbs
1070113	Steel Pipe 6in	44 lbs
1080113	Steel Pipe 8in	65 lbs



Anfor steel pipe has 2-levers on socket ends.

0113-12W	Steel Pipe 12in	138 lbs (O-rings included on 12" only)
----------	-----------------	--



20' Steel Pipe

Steel pipe with Bauer couplers. Order O- ring separately!

1050116	Steel Pipe 4in	41 lbs
1070116	Steel Pipe 6in	75 lbs
1080116	Steel Pipe 8in	100 lbs





Hose Fittings

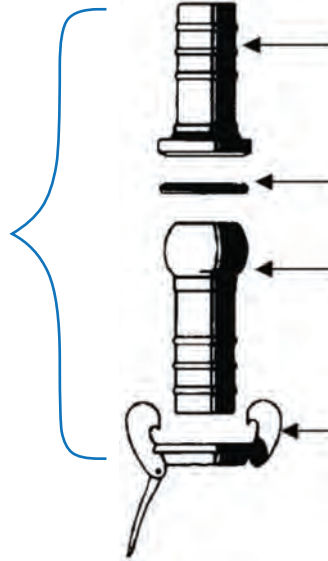




Hose Fittings

Factory welded and pressure tested - an integral system that ensures total performance

Produced from high-grade, high-tensile steel, abrasion-resistant, hot-dip galvanization



Genuine Bauer hose connectors sizes 4", 6", and 8" have a 3 hose bead making the length longer compared to our competitors

Standard water O-ring or optional oil resistant

Up to 30 degree articulation on the coupling joint

Welded hinge and pin design, compared to our competitors' rivets; this makes the Genuine Bauer lever stronger and more durable, unlike 'B' Type imitations



Since its development by Rudolf Bauer more than 50 years ago, several attempts have been made to copy the Genuine Bauer HK quick coupling, but none of the imitations have reached the quality and durability of the original.





Sets

1010001	Hose Connector Set 2in	5 lbs
1030001	Hose Connector Set 3in	7 lbs
1050001	Hose Connector Set 4in	12 lbs
1070001	Hose Connector Set 6in	24 lbs
1080001	Hose Connector Set 8in	37 lbs



Ball

1011011	Ball x Hose Connector 2in	1 lbs
1091011	Ball x Hose Connector 3in	2 lbs
1051011	Ball x Hose Connector 4in	3 lbs
1071011	Ball x Hose Connector 6in	7 lbs
1081011	Ball x Hose Connector 8in	11 lbs



Lever

1010134	Lever 2in	1 lbs
1030134	Lever 3in	2 lbs
1050134	Lever 4in	5 lbs
1060134	Lever 6in	10 lbs
1080134	Lever 8in	14 lbs



Socket

1010711	Socket x Hose Connector 2in	1 lbs
1090711	Socket x Hose Connector 3in	2 lbs
1050711	Socket x Hose Connector 4in	3 lbs
1070711	Socket x Hose Connector 6in	7 lbs
1080711	Socket x Hose Connector 8in	11 lbs



**O-rings sold separately, page 31*



Sets

1050003	WC Crimp Hose Set 4in	12 lbs
1070003	WC Crimp Hose Set 6in	25 lbs
1080003	WC Crimp Hose Set 8in	40 lbs



Ball

1058011WC	Ball x WC Crimp 4in	3 lbs
1078011WC	Ball x WC Crimp 6in	7 lbs
1088011WC	Ball x WC Crimp 8in	13 lbs



Socket

1058711WC	Socket x WC Crimp 4in	3 lbs
1078711WC	Socket x WC Crimp 6in	7 lbs
1088711WC	Socket x WC Crimp 8in	13 lbs

**O-rings sold separately, page 31*





Stock Bauer vs. WC Crimp

Which one should you use?

Stock Bauer Hose Fitting

A rolled hose barb will work well when clamped or banded in a suction application.

However, there is the danger of the hose being pushed off a rolled shank barb when pressurized. It is difficult to gain enough hose retention on simple rolled barsbs.



Too much crimping force will collapse a rolled barb shank, guaranteeing failure under pressure.

Rolled barb shanks cost less to make and attach. If for use as a suction line, no problem. If pressurized use, beware.

WC Crimp Hose Fitting

The machined barb shank is heavy enough to withstand crimping and has a larger retention surface with many ridges. A hose will push off under normal use. Crimping is definitely the most secure method to attach a hose to a fitting.



The machined barb shank is heavy enough to withstand crimping and has a larger retention surface with many ridges. There is no way a hose will push off under normal use. Crimping is definitely the most secure method to attach a hose to a fitting.

A WC Crimp hose fitting will work for suction or pressure conditions. Many are trying to standardize their hose inventory to one type. Just makes it easier to stock and pull the right hose. People can make mistakes and pull a suction hose when a pressure hose is needed. The WC Crimp hose fitting handles all applications so one hose type satisfies all needs.

Ask your hose supplier for Genuine Bauer!



Galvanized Fitting Specifications

- Genuine Bauer quick coupling piping is a complete system quickly installed, and has no loose parts
- The Bauer fittings provide fast connections for easy set-up and tear-down
- Uneven terrain is no problem due to the 30 degrees of articulation on fittings through 4" and 20- degrees on 6" and 8"
- Produced from high-grade, high-tensile steel
- Abrasion-resistant, hot-dip galvanized, according to Din 50976
- Suction and pressure -tight
- Environmentally safe, will not leak



Size	NOM PSI	Bend Angle
2"	290	30
3"	290	30
4"	174	30
6"	174	20
8"	174	20
10"	50	16
12"	50	16



Check out page 32 for our new Warhammer closing tool



Flange x Ball

1006987W	Flange x Ball	4in	16 lbs
1007005W	Flange x Ball	6in	25 lbs
1007003W	Flange x Ball	8in	39 lbs



Flange x Ball

1417010W	Flange x Ball 'B' type	10in	55 lbs
1427012W	Flange x Ball 'B' type	12in	84 lbs



1007010W	Flange x Ball Anfor	10in	41 lbs
1007012W	Flange x Ball Anfor	12in	67 lbs



Flange x Socket

1006986W	Flange x Socket	4in	10 lbs
1007004W	Flange x Socket	6in	14 lbs
1007002W	Flange x Socket	8in	22 lbs

**O-rings sold separately, page 31*



Flange x Socket

1417310W	Flange x Socket 'B' type	10in	35 lbs
1427312W	Flange x Socket 'B' type	12in	45 lbs



1007310W	Flange x Socket Anfor	10in	39 lbs
1007312W	Flange x Socket Anfor	12in	70 lbs





Flange x Ball Enlargers

W108FX159B	Flange 4in x Ball w/Lever 6in	25 lbs
W159FX194B	Flange 6in x Ball w/Lever 8in	30 lbs



Flange x Ball Reducers

W159FX108B	Flange 6in x Ball w/Lever 4in	30 lbs
W194FX159B	Flange 8in x Ball w/Lever 6in	33 lbs
W194FX108B	Flange 8in x Ball w/Lever 4in	27 lbs



Flange x Socket Enlargers

W108FX159S	Flange 4in x Socket 6in	15 lbs
W159FX194S	Flange 6in x Socket 8in	16 lbs

**O-rings sold separately, page 31*



Flange x Socket Reducers

W159FX108S	Flange 6in x Socket 4in	20 lbs
W194FX159S	Flange 8in x Socket 6in	24 lbs
W194FX108S	Flange 8in x Socket 4in	22 lbs

**O-rings sold separately, page 31*





Elbow: 90 degree

1051101W	Elbow 90 Degree	4in	11 lbs
1071101W	Elbow 90 Degree	6in	23 lbs
1081101W	Elbow 90 Degree	8in	35 lbs

**O-rings sold separately, page 31*



Elbow: 90 degree

1411101W	Elbow 90 Degree	10in	65 lbs
1421101W	Elbow 90 Degree	12in	84 lbs



Anfor - Elbow: 90 degree

1101-10W	Elbow 90 Degree	10in	53 lbs
1321101	Elbow 90 Degree	12in	84 lbs



Elbow: 45 degree

1051301W	Elbow 45 Degree	4in	9 lbs
1071301W	Elbow 45 Degree	6in	20 lbs
1081301W	Elbow 45 Degree	8in	35 lbs

**O-rings sold separately, page 31*



Elbow: 45 Degrees

1411301W	Elbow 45 Degree	10in	55 lbs
1421301W	Elbow 45 Degree	12in	78 lbs



Anfor - Elbow: 45 degree

1301-10W	Elbow 45 Degree	10in	44 lbs
1321301	Elbow 45 Degree	12in	80 lbs





WYE

1050901W	WYE-Socket x Socket x Ball	4in	12 lbs
1070901W	WYE-Socket x Socket x Ball	6in	31 lbs
1080901W	WYE-Socket x Socket x Ball	8in	46 lbs

**O-rings sold separately, page 31*



WYE

1050902W	WYE-Ball x Ball x Socket	4in	17 lbs
1070902W	WYE-Ball x Ball x Socket	6in	40 lbs
1080902W	WYE-Ball x Ball x Socket	8in	59 lbs

**O-rings sold separately, page 31*



WYE

1410901W	WYE - Socket x Socket x Ball	10in	88 lbs
1420901W	WYE - Socket x Socket x Ball	12in	150 lbs



Anfor - WYE

0901-10W	WYE - Socket x Socket x Ball	10in	88 lbs
0901-12W	WYE - Socket x Socket x Ball	12in	150 lbs



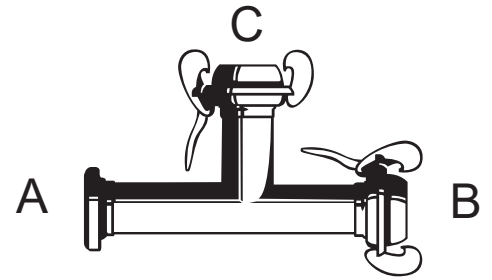


Reading Tee Configurations

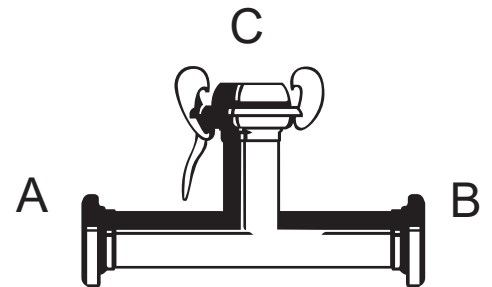
Not Sure Which Product You Need?

In these illustrations, each opening of the fitting is identified with a letter which indicates the sequence to be followed in reading the configuration of the tee.

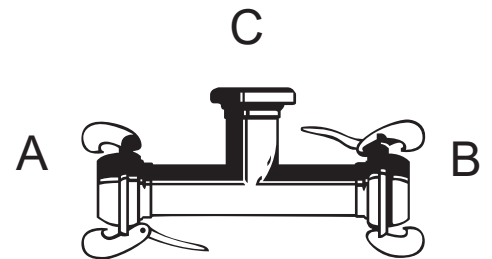
Female/Socket x Male/Ball x Male/Ball
or Leg A x B x C



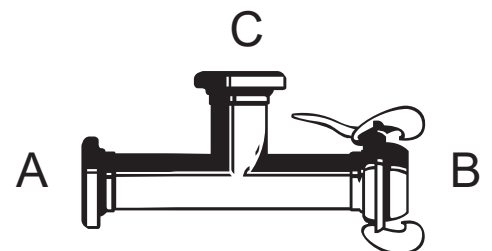
Female/Socket x Female/Socket x
Male/Ball or Leg A x B x C



Male/Ball x Male/Ball x Female/Socket
or Leg A x B x C



Female/Socket x Male/Ball x Female/
Socket or Leg A x B x C





genuine BAUER TEE

1051701W	Socket x Ball x Ball 4in	20 lbs
1071701W	Socket x Ball x Ball 6in	40 lbs
1081701W	Socket x Ball x Ball 8in	65 lbs

**O-rings sold separately, page 31*



genuine BAUER TEE

1051801W	Socket x Socket x Ball 4in	14 lbs
1071801W	Socket x Socket x Ball 6in	28 lbs
1081801W	Socket x Socket x Ball 8in	47 lbs

**O-rings sold separately, page 31*



genuine BAUER TEE

1051901W	Ball x Ball x Socket 4in	20 lbs
1071901W	Ball x Ball x Socket 6in	40 lbs
1081901W	Ball x Ball x Socket 8in	65 lbs

**O-rings sold separately, page 31*



genuine BAUER TEE

1052001W	Socket x Ball x Socket 4in	20 lbs
1072001W	Socket x Ball x Socket 6in	40 lbs
1082001W	Socket x Ball x Socket 8in	65 lbs

**O-rings sold separately, page 31*



WOLF CREEK FITTINGS 'B' TYPE - TEE

1411701W	Socket x Ball x Ball 10in	85 lbs
1421701W	Socket x Ball x Ball 12in	135 lbs



WOLF CREEK FITTINGS Anfor - TEE

1701-10W	Socket x Ball x Ball 10in	85 lbs
1321701W	Socket x Ball x Ball 12in	135 lbs





Enlarger

1011601W	Enlarger 2in x 3in	4 lbs
1091611W	Enlarger 3in x 4in	7 lbs
1051601W	Enlarger 4in x 6in	16 lbs
1051811W	Enlarger 4in x 8in	25 lbs
1071601W	Enlarger 6in x 8in	28 lbs

**O-rings sold separately, page 31*



Enlarger

1601-810W	Enlarger 8in Bauer x 10in Anfor	27 lbs
1601-812W	Enlarger 8in Bauer x 12in Anfor	50 lbs
1601-1012W	Enlarger 12in Anfor x 10in 'B' Type	53 lbs
1421601W	Enlarger 8in Bauer x 12in 'B' Type	42 lbs

**O-rings sold separately, page 31*



8" x 10"
8" x 12"

10" x 12"



8" x 12"



Reducer

1032701W	Reducer 3in x 2in	3 lbs
1052711W	Reducer 4in x 3in	6 lbs
1007091W	Reducer 6in x 4in	12 lbs
1082711W	Reducer 8in x 4in	20 lbs
1082701W	Reducer 8in x 6in	22 lbs

**O-rings sold separately, page 31*



Reducer

2701-108W	Reducer 10in Anfor x 8in Bauer	27 lbs
2701-128W	Reducer 12in Anfor x 8in Bauer	56 lbs
2701-1210W	Reducer 12in Anfor x 10in Anfor	53 lbs
1422701W	Reducer 12in 'B' Type x 8in Bauer	51 lbs



8" x 10"
8" x 12"



10" x 12"



8" x 12"



Ball x MPT

Lever NOT included

1010811W	Ball x MPT 2in	1 lbs
1050811W	Ball x MPT 4in	7 lbs
1070811W	Ball x MPT 6in	12 lbs
1080810W	Ball x MPT 8in	28 lbs



Lever IS included

1090820W	Ball x MPT 3in	6 lbs
1050811L	Ball x MPT 4in	12 lbs
1070811L	Ball x MPT 6in	24 lbs
1080810L	Ball x MPT 8in	38 lbs



Socket x MPT

1010511W	Socket x MPT 2in	1 lbs
1090521W	Socket x MPT 3in	3 lbs
1050511W	Socket x MPT 4in	6 lbs
1070511W	Socket x MPT 6in	12 lbs
1080511W	Socket x MPT 8in	24 lbs

*O-rings sold separately, page 31



Ball x FPT

Lever IS included

1010211W	Ball x FPT 2in	1 lbs
1090211W	Ball x FPT 3in	3 lbs
1050211W	Ball x FPT 4in	6 lbs
1070211W	Ball x FPT 6in	12 lbs
1080211W	Ball x FPT 8in	24 lbs



Socket x FPT

1010311W	Socket x FPT 2in	1 lbs
1090311W	Socket x FPT 3in	3 lbs
1050311W	Socket x FPT 4in	5 lbs
1070311W	Socket x FPT 6in	10 lbs
1080311W	Socket x FPT 8in	36 lbs

*O-rings sold separately, page 31



Ball x MPT Enlarger/Reducers

WB64MPTL	Ball 6in x MPT 4in	11 lbs
WB86MPTL	Ball 8in x MPT 6in	15 lbs



Socket x MPT Enlarger/Reducers

WS64MPT	Socket 6in x MPT 4in	6 lbs
WS86MPT	Socket 8in x MPT 6in	8 lbs





Strainer

2009874	Strainer 4in w/ 1 3/4in Hole	10 lbs
2009873	Strainer 6in w/ 2 1/4in Hole	21 lbs
2009872	Strainer 8in w/ 2 3/4in Hole	27 lbs



Bar Strainer

2020874W	Strainer 4in	14 lbs
2020873W	Strainer 6in	26 lbs
2020872W	Strainer 8in	37 lbs



'B' Type - Strainer

3" holes

1412008W	Strainer x Socket	10in	26lbs
1412009W	Strainer x Ball w/ Lever	10in	75 lbs
1422008W	Strainer x Socket	12in	29 lbs
1422009W	Strainer x Ball w/ Lever	12in	80 lbs



Anfor - Strainer x Ball w/ Ring

3" holes

1312009W	Strainer x Ball w/ Ring	10in	35 lbs
1322009W	Strainer x Ball w/ Ring	12in	38 lbs



Anfor - Strainer x Socket

3" holes

1312008W	Strainer x Socket	10in	35 lbs
1322008W	Strainer x Socket	12in	38 lbs





Air Vent Pipe

Vent Pipe (separate)

1050110W	Air Vent Pipe 4in - 2in nipple	13 lbs
1070110W	Air Vent Pipe 6in - 3in nipple	24 lbs
1080110W	Air Vent Pipe 8in - 3in nipple	35 lbs

**O-rings sold separately, page 31*

Vent Pipe (separate)

F030-20003	Air Vent - 2in FPT	2 lbs
F030-30003	Air Vent - 3in FPT	4 lbs
F030-40003	Air Vent - 4in FPT	6 lbs

Vent Pipe & Vent Assembly

1050110A	Air Vent Pipe 4in - 2in nipple, w/ Air Vent 2in FPT
1070110A	Air Vent Pipe 6in - 3in nipple, w/ Air Vent 3in FPT
1080110A	Air Vent Pipe 8in - 3in nipple, w/ Air Vent 3in FPT



'B' Type - Air Vent Pipe

Vent Pipe (separate)

0110-10W	Air Vent Pipe - 10in 4in Nipple	51 lbs
0110-12W	Air Vent Pipe - 12in 4in Nipple	75 lbs

Vent Pipe (separate)

F030-40003	Air Vent - 4in FPT	6 lbs
------------	--------------------	-------

Anfor - Air Vent Pipe

Vent Pipe & Vent Assembly

0110-10A	Air Vent Pipe - 10in 4in Nipple, w/Air Vent 4in FPT	51 lbs
0110-12A	Air Vent Pipe - 12in 4in Nipple, w/Air Vent 4in FPT	75 lbs



Stepbow

1051501	Stepbow 4in	28 lbs
1071501	Stepbow 6in	62 lbs
1081501	Stepbow 8in	72 lbs

**O-rings sold separately, page 31*





End Ball

1006955	End Ball	2in	1 lbs
1007052	End Ball	3in	3 lbs
1007057	End Ball	4in	7 lbs
1007056	End Ball	6in	9 lbs
1007053	End Ball	8in	12 lbs



'B' Type - End Ball

1417053W	End Ball	10in	35 lbs
1427053W	End Ball	12in	51 lbs



Anfor - End Ball

7010-10W	End Ball	10in	25 lbs
7010-12W	End Ball	12in	38 lbs



End Socket

1010201W	End Socket	2in	1 lbs
1030201W	End Socket	3in	1 lbs
1050201W	End Socket	4in	2 lbs
1070201W	End Socket	6in	4 lbs
1080201W	End Socket	8in	7 lbs

**O-rings sold separately, page 31*



'B' Type - End Socket

1410201W	End Socket	10in	15 lbs
1420201W	End Socket	12in	19 lbs



Anfor - End Socket

0201-10W	End Socket	10in	20 lbs
0201-12W	End Socket	12in	34 lbs





Flange x Flange Reducer

W108FX159F	Flange 4in x Flange 6in	18 lbs
W108FX194F	Flange 4in x Flange 8in	18 lbs
W159FX194F	Flange 6in x Flange 8in	26 lbs
W194FX250F	Flange 8in x Flange 10in	44 lbs
W194FX300F	Flange 8in x Flange 12in	46 lbs
W250FX300F	Flange 10in x Flange 12in	48 lbs
W300FX475F	Flange 12in x Flange 18in	90 lbs



Flange 90

W10890XFLG	Flange 90 4in	22 lbs
W15990XFLG	Flange 90 6in	40 lbs
W19490XFLG	Flange 90 8in	59 lbs
W25090XFLG	Flange 90 10in	60 lbs
W30090XFLG	Flange 90 12in	73 lbs



Flange 45

W10845XFLG	Flange 45 4in	20 lbs
W15945XFLG	Flange 45 6in	37 lbs
W19445XFLG	Flange 45 8in	47 lbs
W25045XFLG	Flange 45 10in	58 lbs
W30045XFLG	Flange 45 12in	70 lbs



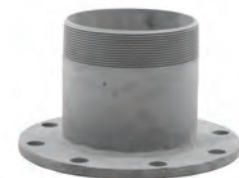
Flange Tee

W108FXTEE	Flange 4in x 4in x 4in Tee	36 lbs
W159FXTEE	Flange 6in x 6in x 6in Tee	42 lbs
W194FXTEE	Flange 8in x 8in x 8in Tee	60 lbs



Flange x MPT

W108FX108MPT	Flange x MPT 4in	13 lbs
W159FX159MPT	Flange x MPT 6in	20 lbs
W194FX194MPT	Flange x MPT 8in	30 lbs

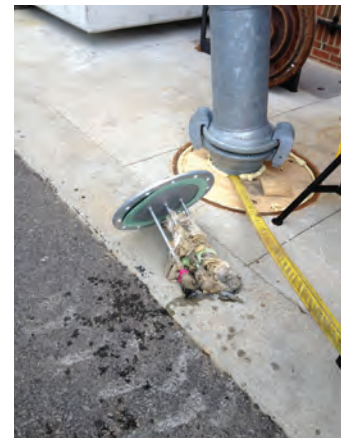




WOLF CREEK — HUNNEBUCKET

The Hunnebucket is the right inline strainer to ensure your pumps are operating efficiently, minimizing pump wear from undesired substances in your lines. Pipe inline strainers will reduce your downtime, reduce your maintenance, protect downstream systems, and improve the final product quality. Their low investment cost makes inline strainers imperative for your process systems.

Protect the pump, protect components in the system or to remove contaminants from the fluid.



Hunnebucket Strainer

Designed to be both effective and durable, the basket/screen is the heart that keeps your pump safe.

1321017A	HunneBucket w/ 12in Lid	12in Flange x Flange	180 lbs
1081017A	HunneBucket w/ 8in Lid	8in Flange x Flange	80 lbs
1071017A	HunneBucket w/ 6in Lid	6in Flange x Flange	60 lbs

**Lid, gasket and cap are included. Bolt kits are NOT included.*

Remove cap to visually inspect strainer





Ball x Ball

W108BX108B	Ball x 4in Ball	4in	15 lbs
W159BX159B	Ball x 6in Ball	6in	29 lbs
W194BX194B	Ball x 8in Ball	8in	43 lbs



Socket x Socket

W108SX108S	Socket x 4in Socket	4in	5 lbs
W159SX159S	Socket x 6in Socket	6in	8 lbs
W194SX194S	Socket x 8in Socket	8in	14 lbs

**O-rings sold separately, page 31*



Anfor x 'B' Type

1410721W	'B' Type Socket x Anfor Ball	10in	30 lbs
1410722W	Anfor Socket x 'B' Type Ball	10in	50 lbs
1420721W	'B' Type Socket x Anfor Ball	12in	50 lbs
1420722W	Anfor Socket x 'B' Type Ball	12in	80 lbs



Victualic x Ball

VBM400	Victualic x Ball	4in	12 lbs
VBM600	Victualic x Ball	6in	18 lbs
VBM800	Victualic x Ball	8in	25 lbs



Victualic x Socket

VBF400	Victualic x Socket	4in	8 lbs
VBF600	Victualic x Socket	6in	14 lbs
VBF800	Victualic x Socket	8in	20 lbs

**O-rings sold separately, page 31*





Ball x Cam-Loc Male

1033302W	Ball w/Lever x Male Cam-Loc 3in	7 lbs
1053302W	Ball w/Lever x Male Cam-Loc 4in	14 lbs
1073302W	Ball w/Lever x Male Cam-Loc 6in	26 lbs



Ball x Cam-Loc Female

1033301W	Ball w/Lever x Female Cam-Loc 3in	7 lbs
1053301W	Ball w/Lever x Female Cam-Loc 4in	15 lbs
1073301W	Ball w/Lever x Female Cam-Loc 6in	27 lbs



Socket x Cam-Loc Male

1032202W	Socket x Male Cam-Loc 3in	4 lbs
1052202W	Socket x Male Cam-Loc 4in	7 lbs
1072202W	Socket x Male Cam-Loc 6in	13 lbs

**O-rings sold separately, page 31*



Socket x Cam-Loc Female

1032201W	Socket x Female Cam-Loc 3in	4 lbs
1052201W	Socket x Female Cam-Loc 4in	8 lbs
1072201W	Socket x Female Cam-Loc 6in	14 lbs

**O-rings sold separately, page 31*





10-12" B Type Hose Fittings

Sets

1410001	Hose Connector Set	10in	49 lbs
1420001	Hose Connector Set	12in	86 lbs



Ball

1411011	Ball x Hose Connector	10in	49 lbs
1421011	Ball x Hose Connector	12in	86 lbs



Lever

1410134	Lever	10in	49 lbs
1420134	Lever	12in	86 lbs



Socket

1410711	Socket x Hose Connector	10in	49 lbs
1420711	Socket x Hose Connector	12in	86 lbs





10-12" Anfor Hose Fittings



Sets

1310001	Hose Connector Set 10in	49 lbs
1320001	Hose Connector Set 12in	86 lbs



Ball

1311011	Ball x Hose Connector 10in	19 lbs
1321011	Ball x Hose Connector 12in	30 lbs



Ring

1310134	Ring 10in	8 lbs
1320134	Ring 12in	16 lbs



Socket

1310711	Socket x Hose Connector 10in	22 lbs
1320711	Socket x Hose Connector 12in	40 lbs





Storage Systems and Road Crossings



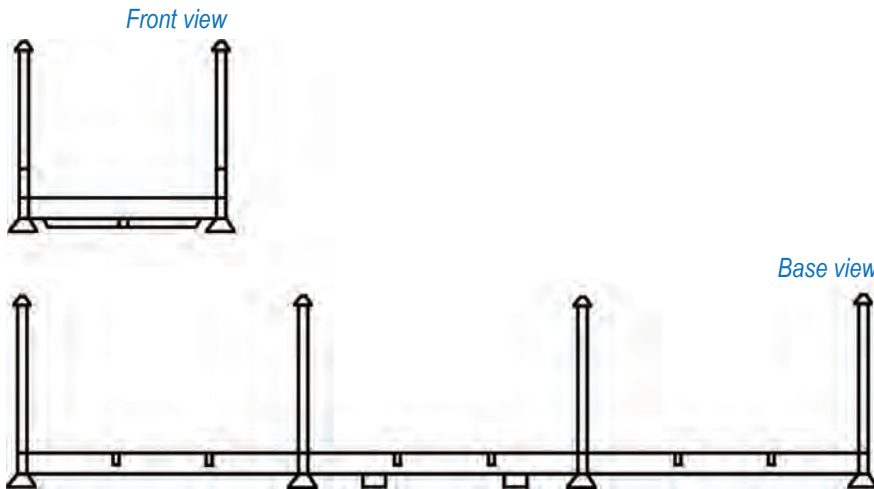


Racks and Rack Posts



Rack6	Pipe Rack - 1,500/lbs Cap - 6/ft Long	350 lbs
Rack	Pipe Rack - 2,500/lbs Cap - 18/ft Long	800 lbs
Rack Post	Replacement Posts for Pipe Racks	20 lbs

Specifications



- 2,500 lbs capacity per rack stacked 2 high
- Rack size: 216" in length x 48" in width O.I. •
(211" length x 43" width I.D.)
- 12" high corner pocket/socket
- Blue paint
- Removable posts
- 2 runners under each 48" end
- Fork tubes
- Corner stacking posts
- 37" clear height (48.5" total height)
- Shipping weight: 800 lbs

Pipe Rack Quantities (approximately)

Note: Quantities double for 10' pipe

4in x 20ft steel up to	40pcs
6in x 20ft steel up to	30pcs
8in x 20ft steel up to	20pcs
4in x 20ft poly up to	50pcs
6in x 20ft poly up to	25pcs
8in x 20ft poly up to	16pcs



Advantages

- Transportable
- Stackable
- Prevent pipe damage
- Manage yard inventory



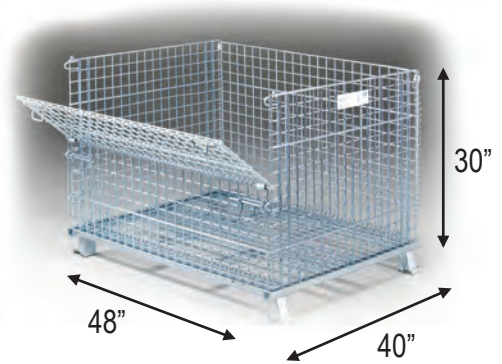


Folding Wire Baskets

The side and base mesh are 2"x2". The gate is a 1/2 Drop Front Gate with only four latch bolts to engage for quick and easy assembly. The basket has four way entry for forklift and pallet jack clearance of 4.5". They may be stacked up to four high fully loaded. Heavy-duty base design allows for longer life cycles.

Specifications

- 40in x 48in x 30in
- 4000 lbs Capacity
- Weight 156 lbs



Road Crossings

The Road Crossing requires full ground contact in the tire zone and allows for a working pressure up to 125 psi, allowing a single load weight of 2.64 metric tons (5,819 lbs.) per axel.

We estimate the flow rate on the crossing to be 750gpm for the 8" and 1000gpm for the 12", based on an average velocity of 5 FT/S.

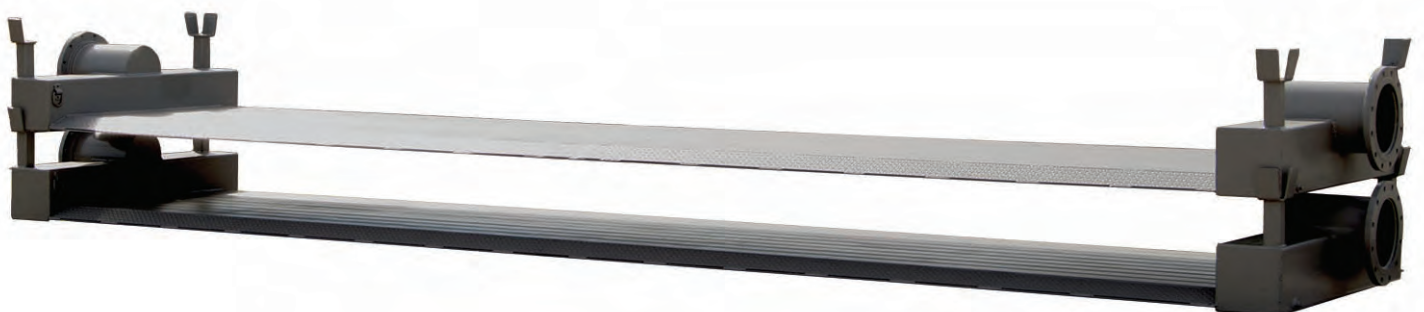
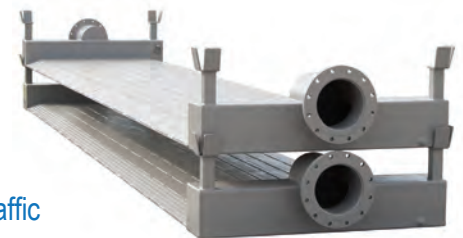
RC812	8in FLG x 12ft (14'-6" wide)	1150 lbs
RC824	8in FLG x 24ft (25'-6" wide)	2200 lbs
RC1212	12in FLG x 12ft (14'-6" wide)	2270 lbs
RC1224	12in FLG x 24ft (25'-6" wide)	4450 lbs



The 8" flanged Road Crossing is 36" deep with a drive deck of 12' wide (11'-8" actual width) and 24' wide (23'-3" actual width).

The 12" flanged Road Crossing is 66" deep with a drive deck of 12' wide (11'-8" actual width) and 24' wide (23'-3" actual width).

- Used to transfer liquid across streets, driveways, and vehicle paths without blocking traffic
- Heavy steel construction for strength and durability





Support Items





Bauer O-Rings

Water Sealing Ring (SBR Styrene Butadiene) is acceptable for most applications involving water, sewage, particles, and vegetable based oils. -22 to 203 degree

Oils Sealing Ring (NBR Nitril Butadiene) is used if material includes mineral oils; -31 to 257 degrees

1010140	Sealing Ring (Water) 2in	1 lb
1030140	Sealing Ring (Water) 3in	1 lb
1050140	Sealing Ring (Water) 4in	1 lb
1070140	Sealing Ring (Water) 6in	1 lb
1080140	Sealing Ring (Water) 8in	1 lb
1050141	Sealing Ring (Oil) 4in	1 lb
1070141	Sealing Ring (Oil) 6in	1 lb
1080141	Sealing Ring (Oil) 8in	1 lb

Order one (1) Sealing Ring per Socket.



10" - 12" 'B' Type O-Rings

Water Sealing Ring (SBR Styrene Butadiene) is acceptable for most applications involving water, sewage, particles, and vegetable based oils.

1410140	Sealing Ring for Water 10in	1 lb
1420140	Sealing Ring for Water 12in	1 lb



10" - 12" Anfor O-Rings

Water Sealing Ring (SBR Styrene Butadiene) is acceptable for most applications involving water, sewage, particles, and vegetable based oils.

1310140	Sealing Ring for Water 10in	1 lb
1320140	Sealing Ring for Water 12in	1 lb



Flange Gasket

GSKFF400RR	Gasket Red Rubber	4in
GSKFF600RR	Gasket Red Rubber	6in
GSKFF800RR	Gasket Red Rubber	8in
GSKFF1000RR	Gasket Red Rubber	10in
GSKFF1200RR	Gasket Red Rubber	12in
GSKFF1800RR	Gasket Red Rubber	18in





WARHAMMER

Multi-Closing Tool

The Warhammer is the tool to get the job done connecting and disconnecting pipe. The Warhammer works with both Bauer and Anfor connections. This is the one tool you'll need to set up and tear down portable pipe. And, you can only find it at Wolf Creek.



Warhammer Multi-Closing Tool

MT012BG Warhammer 2in - 8in - Bauer & 10in - 12in - Anfor 9 lbs





Liability and Warranty

Wolf Creek will support the normal warranty offered by the manufacturers of the products we distribute. We offer nor grant any further warranty beyond the manufacturers warranty, unless in writing and approved by a senior officer of the corporation.

Wolf Creek expressly states this warranty is given in place of all other warranties and disclaims and/or excludes any implied warranties of merchantability and fitness for the particular purpose.

Furthermore, Wolf Creek will not be responsible for incidental or consequential damages for the products that it sells. Wolf Creek shall be responsible only to the extent of replacement or repair of defective materials in accordance with the manufacturer's stated warranty.

This warranty is not to be considered a consumer warranty and extends only to the person or organization that purchased the product(s) from Wolf Creek.

Warranties may be voided by improper application or usage of the items. Pressures should never exceed the lowest manufacturers rating of the part or component in an assembly. Parts or assemblies should always be supported when hanging or spanning a space, (i.e. pump discharges). Excessive temperatures should be avoided based on the manufacturers specification tolerance of the item or assembly. Wear or damage from abrasive or corrosive materials, equipment damage, abusive handling is not warranted. Air relief should be provided when necessary to avoid vacuum collapsing.

Returns

All sales are final upon receipt of goods. However, product in resalable condition may be returned within 30 days for credit only. Prior approval is required before product will be restocked by Wolf Creek.

A restock fee of up to 25% may apply due to cleaning, repackaging, or salability of the item(s). Compensation for returned product will be in the form of a credit memo.

Discrepancies

If you find a problem, such as incorrect items, quantities, or price, please let us know within five business days upon delivery so that we can resolve any discrepancies.



Establishing Credit

Thank you for doing business with Wolf Creek Portable Piping Products. If you desire to purchase on credit, please read these conditions, fill out the requested information on the Credit Application, sign, and mail or fax to:

Wolf Creek Portable Piping Products
6051 Wolf Creek Pike
Trotwood, Ohio 45426
800-488-7305
Fax (877) 531-3804

Your request for credit will be processed upon receipt. The more information you provide, the faster we can serve you.

Payment

Please follow the terms agreed to upon initiation of your account. Terms are printed on each invoice.

Please report invoice/pricing errors within thirty (30) days to receive corrective action.

Your account will be considered past due if you are beyond 30 days, unless prior arrangements have been made. By day 60 your account will be placed on C.O.D.

Soon after, your past due obligation will be placed for collections.

Your past due amounts will be charged interest at the rate of 1 1/2% per month. Once the account is brought current, credit worthiness will be re-evaluated before open account purchases will again be allowed.

In the event of a returned check, you will be charged a service fee equal to the amount charged to Wolf Creek by the banks involved.





We are here to make your life easier!

Portablepiping.com

Phone: (800) 488-7305

Email: sales@wcportablepiping.com